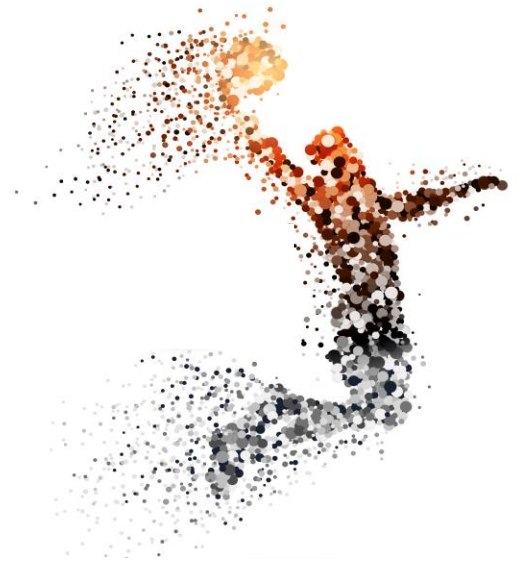


# NSAA HIGH SCHOOL GIRLS BASKETBALL CHAMPIONSHIPS



## ADDITIONAL INFORMATION

Contact: (402) 434-5348 | (800) 423-8212

On behalf of the Lincoln Convention and Visitors Bureau, welcome to Lincoln!

The Nebraska State Championship tournaments provide special opportunities for the athletes and coaches who have worked hard all year and won a place in the Nebraska School Activities Association state finals. The Lincoln Convention and Visitors Bureau (CVB) recognizes the importance of this achievement and wants to make this visit a true championship experience! The facilities being utilized this year are Pinnacle Bank Arena, Lincoln Northeast High School, Lincoln Southwest High School, Lincoln Southeast High School and Lincoln North Star High School. In order to welcome the high school basketball players from your area, we offer the following information:

### OUR COMMITMENT TO HEALTH & SAFETY

The Lincoln Convention and Visitors Bureau continues to monitor the situation surrounding the Coronavirus (COVID-19) along with partners with the Lincoln Chamber of Commerce, City, County and State officials. We also want to remind you of the health practices recommended by the CDC, like frequent handwashing, mask wearing and social distancing. If you have any questions, we encourage visitors as well as residents to check the City/County resource page at [www.lincoln.ne.gov/city/covid19/](http://www.lincoln.ne.gov/city/covid19/).

### CONSTRUCTION & TRAFFIC CHANGES

Website: [www.lincoln.ne.gov/city/pworks/projects/street-closures](http://www.lincoln.ne.gov/city/pworks/projects/street-closures)

9<sup>th</sup> Street from 'O' to 'N' Street  
10<sup>th</sup> Street from 'N' to 'O' Street

West 'A' Street from SW 10<sup>th</sup> to Coddington (*westbound closure*)  
Coddington Avenue from West 'A' to West Garfield (*northbound and southbound closures*)

### DOWNTOWN PARKING INFORMATION

The Red 1 garage is located across the street from Pinnacle Bank Arena and will offer a \$5 pre-pay rate. In addition, the Green 2 garage is also available at a \$5 pre-pay rate. Payment is credit card only and available at the garage entrance. Other Park & Go garages give you the First Hour FREE, \$1.25 per hour, with a maximum of \$11.25 for all day parking. Pay with a credit card when exiting. For more information about parking rules and regulations, visit the Parking Services website at [parkandgo.org](http://parkandgo.org) or call them at 402-441-PARK (7275).

**Parking meters:** Enforced Monday-Saturday, from 8:00 a.m. to 6:00 p.m. On-street metered spaces range from 30 minutes to 10 hours. They are \$1.25 an hour for most meters. 10-hour meters are \$.75 an hour. Pay by phone by using the PassportParking app. Download it from Google Play or the App Store.

**Downtown:** Approximately 20,000 spaces are available – in metered, on-street spaces and in parking lots or garages available for general public use daily. The city’s Parking Services Division operates all city parking facilities and can be contacted at 402-441-PARK (7275). Parking for oversized vehicles can be arranged by calling Pinnacle Bank Arena at (402) 904-4444 or Polygon Corp at (402) 770-7659.

## DOWNTOWN PARKING FACILITIES

Phone: 402.441.PARK

Red 1 Garage | 555 R Street

Lumberworks Garage | 700 N Street

Market Place | 925 Q Street

Carriage Park Garage | 1128 L Street

Cornhusker Garage | 1220 L Street

Green 2 Garage | 530 P Street

Larson Building | 1317 Q Street

Haymarket Garage | 848 Q Street

Que Place Garage | 1111 Q Street

Center Park Garage | 1120 N Street

University Square Garage | 101 N. 14<sup>th</sup> Street

Blue 3 Garage | 535 P Street



[parkandgo.org](http://parkandgo.org)

## PINNACLE BANK ARENA PARKING

Public parking will be available on a first-come, first-served basis, all days in the Festival Space and premium garage for \$5.00.

All team-filled buses will utilize Gate 2 to park their bus and enter the arena. Only buses with teams and coaches will be allowed to utilize this gate for parking. They will enter into the arena through the door on the right-hand side of Dock 1. There will be attendants present to assist with this and a sign that states, "Team Entrance."

Gate 4 will be for NSAA officials and is a permit parking only gate.

All cheerleaders, bands, etc. can be dropped off on R Street in front of the arena and then we ask that the buses park in the Festival Space at no charge. If they aren't dropping off, they are more than welcome to use the pedestrian bridge to come over to the arena. There will only be westbound traffic in front of the arena for drop off, eastbound will be closed to all traffic off of Arena Drive. All bands must enter into the building on the south side through the main entrance. They will not be allowed to enter through the team entrance.

If you have any questions on parking around Pinnacle Bank Arena please contact Nikki Devor at 402-904-5695 or [ndevor@smglincoln.com](mailto:ndevor@smglincoln.com) and she will be happy to assist you.

## HIGH SCHOOL PARKING INFORMATION

On Tuesday, March 2, games are played at Pinnacle Bank Arena. On Wednesday, March 3, games will be played at Pinnacle Bank Arena, Lincoln Southeast High School, Lincoln Southwest High School and Lincoln North Star High School. Pinnacle Bank Arena will be the site of games on Thursday, March 4. On Friday, March 5 games will be played at Pinnacle Bank Arena and consolation games played at Lincoln Northeast High School. On Saturday,

March 6, championship games will be played at Pinnacle Bank Arena and consolation games played at Lincoln Northeast High School.

**Lincoln Southwest High School** – Free parking is available in the school parking lot.

**Lincoln Northeast High School** – Free parking is available in the school parking lot.

**Lincoln Southeast High School** – Free parking is available in the school parking lot.

**Lincoln North Star High School** – Free parking is available in the school parking lot.

**Pinnacle Bank Arena** – Downtown parking listed above.

## OVERNIGHT ACCOMODATIONS

The Lincoln CVB offers an easy way for visitors to find accommodations in Lincoln. The Lincoln Visitors Center line, (402) 434-5348, has up-to-date information on room availability and refers callers to hotels with vacancies. You can also check out lodging information at [www.lincoln.org](http://www.lincoln.org). We are proud of the commitment of our local lodging facilities to ensure all proper safety measures are in place.

## WHILE YOU ARE HERE

The Capitol City offers many entertainment opportunities including:

Lincoln Children's Zoo, newly expanded and open year-round | 1222 S 27<sup>th</sup> Street

Urban Air Trampoline and Adventure Park | 2840 S 70<sup>th</sup> Street

Lincoln Children's Museum | 1420 P Street

Laser Tag | 6600 N 27<sup>th</sup> Street

Lost in Fun | 8431 Cody Drive

Round One Bowling & Amusement Center | 6100 'O' Street in Gateway Mall

Sun Valley Lanes & Games | 321 Victory Lane

*Due to the various safety measures in place, we encourage you to call ahead.*

## ADDITIONAL INFORMATION

For more information, or to get a copy of the Lincoln Visitors Guide, please stop by your Lincoln Visitors Center at 201 N. 7<sup>th</sup> Street in the Lincoln Station located in the Historic Haymarket or call the Lincoln CVB at (800) 423-8212.

While you are at the Lincoln Visitors Center, make sure and take a selfie with the 5-foot-tall Abraham Lincoln Bobblehead and tag the Lincoln Convention and Visitors Bureau on Facebook or Twitter with hashtag #AbeLNK.